

i NSTRUCTION

HOTEL SAFE



H200N



OAK



NABI

Quality reputed worldwide ———
diplomat SAFE 

How to operate ZOGABI Hotel Safe Model H200?

- Using a screw driver, remove the bolt in the left side of the button plate and pull it front and load batteries in battery compartment (1.5V AA Alkaline 4 pcs). Then, REAdy appears on LED.



1. HOW TO OPEN DOOR ?

The factory initial code of the safe is **1 2 3 4 5 6**.

Step 1 : Press the initial six digit code buttons consecutively.
Then, the door projects out and opens.

1 → 2 → 3 → 4 → 5 → 6

(OPEnEd appears on LED)

- If a wrong code entered, FAILED appears on LED.
- If wrong codes entered over 5 times, EDL gets frozen and doesn't work.
- After 3 minutes in paralysis, EDL recovers in normal state.

2. HOW TO CLOSE DOOR ?

Step 1 : Keeping door closed,

Step 2 : Press 6 digit user's code and **E** button, (CLOSEd appears on LED)
Then, door closes automatically.

- ▲ **Caution** : Without keeping door closed, if **E** button is pressed, the motor doesn't return the boltwork into the housing leaving door open, (FAILED appears on LED)

3. HOW TO ENTER YOUR PERSONAL CODE ?

Step 1 : Decide 6 digit code and press the code buttons consecutively,
(Code appear on LED whenever each button pressed)

Step 2 : Press **E** button,
(The entered code flickers three times and EnTERd follows on LED)

Ex) In case of your code 7 7 8 8 9 9, press the buttons

7 7 8 8 9 9 E.

▲ Caution : Please confirm if your code correctly entered.

7 → 7 → 8 → 8 → 9 → 9

4. HOW TO SET DATE AND HOURS ?

★ Time (date and hour) can be set with Time Set Button on the backside of EDL.

★ For example, to set January 01 2007 12:30

Step 1 : Press Time Button (T) on the back of door (1-00)

Step 2 : Press the last two digits of year (1-07)

Step 3 : Press **E** button (2-00)

Step 4 : Press Month button (2-01)

Step 5 : Press **E** button (3-00)

Step 6 : Press Date button (3-01)

Step 7 : Press **E** button (4-00)

Step 8 : Press Hour button (4-12)

Step 9 : Press **E** button (5-00)

Step 10 : Press Minute button (5-30)

Step 11 : Press **T** button (LED turns off)

★ In short, press the buttons in turn as indicated hereunder.

T(Time Button) → 07(Year) → E → 01(Month) → E → 01(Date)

E → 12(Hour) → E → 30(Minute) → T(Time Button)

5. BATTERY CHANGE ? (1.5V AA Alkaline 4 pcs)

■ When to change batteries ?

When opening door, if the door is not opened in spite of the appearance of **OPEnEd** on LED, it indicates that the battery power is not strong enough to actuate the boltwork. In this case, 4 batteries should be replaced with new ones all together.

Step 1 : Unscrew the bolt in the left side of the EDL plate and pull it to remove.

Step 2 : Replace 4 batteries with new ones. (1.5V AA Alkaline 4 pcs)

Step 3 : Assemble the EDL plate and secure it with a bolt.

- Even though the batteries are completely exhausted, the entered code never erases.
- Life span of the batteries is 18 months in case of daily openings 3 time.
- After replacement of batteries, data and time must be reset.

6. HOW TO CHANGE MASTER CODE ?

Step 1 : Press **E** button, (Bi sound)

Step 2 : Push **C** button, (Bi sound)

Step 3 : Press Present Master Code Buttons, (Bi sound, digit number on LED)

Step 4 : Press **E** button, (digit numbers disappear, Bi sound)

Step 5 : New Master Code buttons,
(4-digits min to 16-digits max, digit numbers on LED, Bi sound)

Step 6 : Push **E** button.
(Entered code flickers 3 times and follows **EnTERd** appears on LED)

Ex) In case of your Present Master Code is 4 4 5 5 6 6,
and your New Master Code is 7 7 8 8 9 9, press the buttons

E C 4 4 5 5 6 6 E 7 7 8 8 9 9 E .

▲ **Caution** : Please confirm if your code correctly entered.

7-7-8-8-9-9

- If the present Master Code is not identified, Master Code can't be changed.

How to use Override Audit Kit(OAK) ?



■ OAK Abbreviation

- OAK : Override Audit Kit	- MC : Master Code
- OC : Override Code	- MCC : Master Code Change
- NOC : Nabi Override Code	- OCC : Override Code Change
- OOC : OAK Override Code	- OC : Override Code
- UC : User Code	- Err : Error
- UCC : User Code Change	- F : Frozen

1. SIX(6) digit Override Code

Controller must change the initial Override Code of Nabi and OAK from the factory with new Override Code accordingly before guests use the safe, so that OAK can be used when a safe is troubled.

- The Override Code of Nabi and OAK should be the same.
- If the initial Override Code is lost, it is impossible to use OAK itself as well as to change its Override Code.

2. HOW TO OPEN DOOR WITH OAK?

★ Connect Nabi and OAK with USB cable.

● NOC and OOC Accord

Welcome
Diplomat Safe

C : Open or Read
: Change OC

● NOC and OOC Disaccord

Welcome
Diplomat Safe

NOC and OOC
Disaccord

C : Open or Read
: Change OC

Step 1 : Press  button.

● NOC and OOC Accord

Press
Override Code

● NOC and OOC Disaccord

NOC and OOC
Disaccord

C : Open or Read
: Change OC

Step 2 : Press 6-digit Override Code.

● The factory initial Override Code of the safe is 0 0 0 0 0 0 .

000000

: Door Open
READ : Reading

Step 3 : Press  button. The door opens automatically.

Match!
Opening Door

Success

C : Open or Read
: Change OC

3. How to change Override Code?

▲ **Caution** : The Nabi Override Code and OAK Override Code should be changed together at the same time. If not, OAK can't be used.

1) How to change Nabi Override Code?

★ Connect Nabi and OAK with USB cable.

● NOC and OOC Accord

Welcome
Diplomat Safe

C : Open or Read
: Change OC

● NOC and OOC Disaccord

Welcome
Diplomat Safe

NOC and OOC
Disaccord

C : Open or Read
: Change OC

Step 1 : Press **#** button.

Change OC
1 : NOC 2 : OOC

Step 2 : Press button **1**.

Change NOC
Press #

Step 3 : Press **#** button.

Press New NOC

NOC and OOC
Disaccord

Step 4 : Press New NOC.

123456

Press #

Step 5 : Press # button.

Wait Please

Change NOC O.K
New NOC : 123456

NOC and OOC
Disaccord

C : Open or Read
: Change OC

2) How to change OAK Override Code?

C : Open or Read
: Change OC

Step 1 : Press # button.

Change OC
1 : NOC 2 : OOC

Step 2 : Press button 2

Change OOC
Press #

Step 3 : Press # button.

Press
Present OOC

Step 4 : Press Present OOC.

● Present OOC Accord

000000 ▶ Press #

● Present OOC Disaccord

! Error ▶ C : Open or Read
: Change OC

Step 5 : Press # button.

Press New OOC

Step 6 : Press New OOC.

123456 ▶ Change OOC
1 : YES 2 : NO

Step 7 : Press # button.

Change OOC O.K
New OOC : 123456 ▶ C : Open or Read
: Change OC

Step 8 : Press C button.

C : Open or Read
: Change OC

4. Function Modes?

- ★ Recording Mode : Maximum 100 records from the latest one preserved.
- ★ Erase Mode (1:YES ⇒ Erase records, 2:NO ⇒ Cancel records erase)

1) Recording Mode

C : Open or Read
: Change OC

Step 1 : Press **C** button.

Press
Override Code

Step 2 : Press 6-digit OC.

● Present OOC Accord

000000

: Door Open
Read : Reading

● Present OOC Disaccord

!
Error

C : Open or Read
: Change OC

Step 3 : Press **Read** button.

Reading Record
Wait Please

Success
Reading (100)



Select Function
Press #

Step 4 : Press **#** button.

1 : Reading
2 : Erase

Step 5 : Press **1** button, (The latest record is shown).

001	123456	UC	Sequence	User Code	Abbreviation of User Code
2008	03:28	12:00	Year	Month:Day	Hour:Minute

Step 6 : Pressing   buttons, audit the records,

Step 7 : Press  button.

1 : Reading
2 : Erase

Step 8 : Press  button.

C : Open or Read
: Change OC

2) Erase Mode

C : Open or Read
: Change OC

Follow 4-1 Step 1 ~ Step 4.

Step 5 : Press  button.

Erase Record?
1 : YES 2 : NO

Step 6 : Press  button,

Erase Record
Wait Please

Success

C : Open or Read
: Change OC

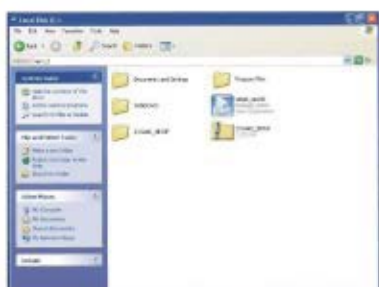
5. HOW TO INSTALL OAK PROGRAM?

1) How to Install ZOGABI Program?

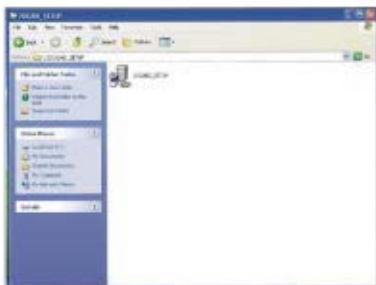
- ① Save ZOGABI_SETUP.zip file in your computer.



- ② Unpack ZOGABI_SETUP.zip file.



- ③ Install program by clicking double times on ZOGABI_SETUP file.



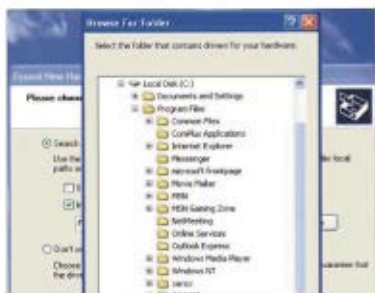
- ④ Connect OAK and computer with USB Cable.

- ⑤ Step 1 : Click 「Install from a list or specific location」
Step 2 : Click 「Next」



- ⑥ Step 1 : Click 「Include this location in the search」
Step 2 : Click 「Browse」



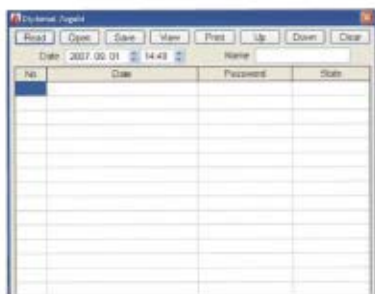


⑧ Step 1 : Click 「Finish」



2) Execution of OAK Recording?

- ① Step 1 : Connet OAK and computer.
- Step 2 : Double Click 「ZOGABI Icon」
- Step 3 : Click 「Read」



② Click 「OK」



③ Check the recording

No.	Date	Password	Status
1	2011.01.02.00.31	000000	0
2	2011.01.01.00.34	123456	U
3	2011.01.01.00.34	123456	U
4	2011.01.01.00.34	123456	U
5	2011.01.01.00.34	123456	U
6	2011.01.01.00.34	123456	U
6	2011.01.01.00.33	123456	U
7	2011.01.01.00.33	123456	U
8	2011.01.01.00.33	123456	U
9	2011.01.01.00.33	123456	U
10	2011.01.01.00.31	123456	U
11	2011.01.01.00.31	123456	U
12	2011.01.01.00.31	123456	U
13	2011.01.01.00.31	123456	U
14	2011.01.01.00.30	123456	U
15	2011.01.01.00.30	123456	U

④ Input Date, Time and Name, and click 「Print」

⑤ Click 「Save」 to put the recording to Folder.



How to secure on floor or wall the safe?

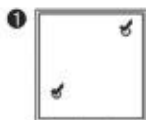
1) To secure on wooden floor or wall.



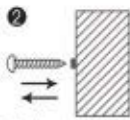
SCREW



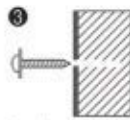
WASHER



1 Open the safe and place it where you want to secure it and mark the securing holes to drill.



2 Drill the marked points with screw driver to make holes.



3 Place the safe at the right position and secure it using screws and washers.



4 Put your personal belongings and close the safe.

2) To secure on concrete floor or wall.



SCREW



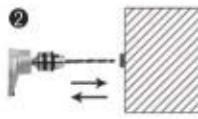
WASHER



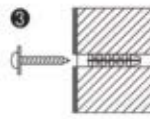
CONCRETE ANCHOR



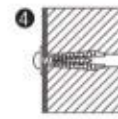
1 Open the safe and place it where you want to secure it and mark the securing holes to drill.



2 Make holes with concrete hand drill (6.5Ø).



3 Insert concrete Anchor into the holes, and place the safe and secure it using screws and washers.



4 Put your personal belongings and close the safe.

diplomat
SAFE LTD

1583-4 SONGJUNG-DONG GANGSEO-GU BUSAN, KOREA TEL (82 51) 831-4400 FAX (82 51) 831-4409

Email : info@dsafe.co.kr www.dsafe.kr

• To improve products constantly, Diplomat Safe reserves the right to alter the specifications without prior notice.
Printed in Korea, September 24, 2008 REV. 1